

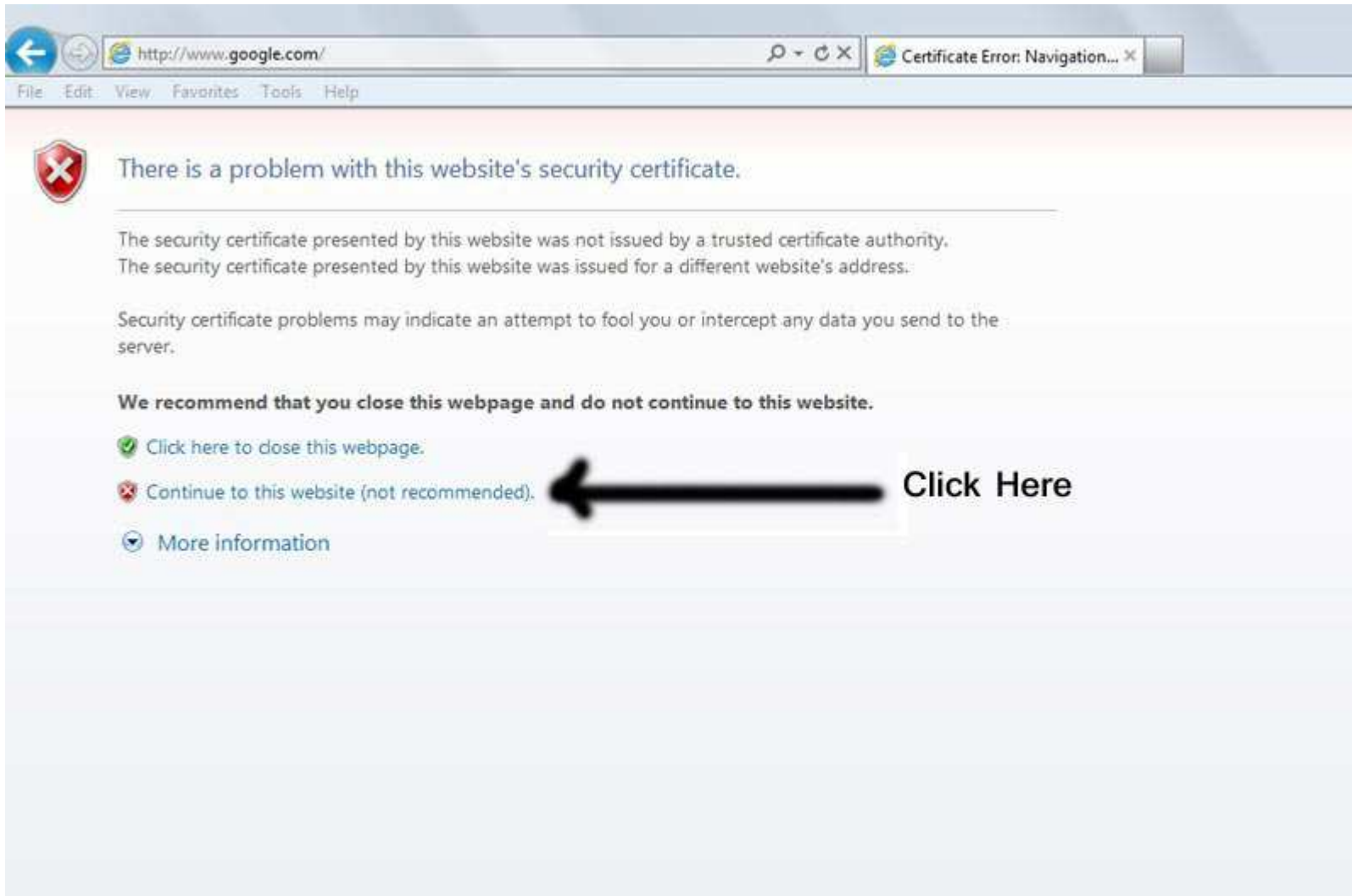
If you are getting error in accessing website.

Do follow given steps.

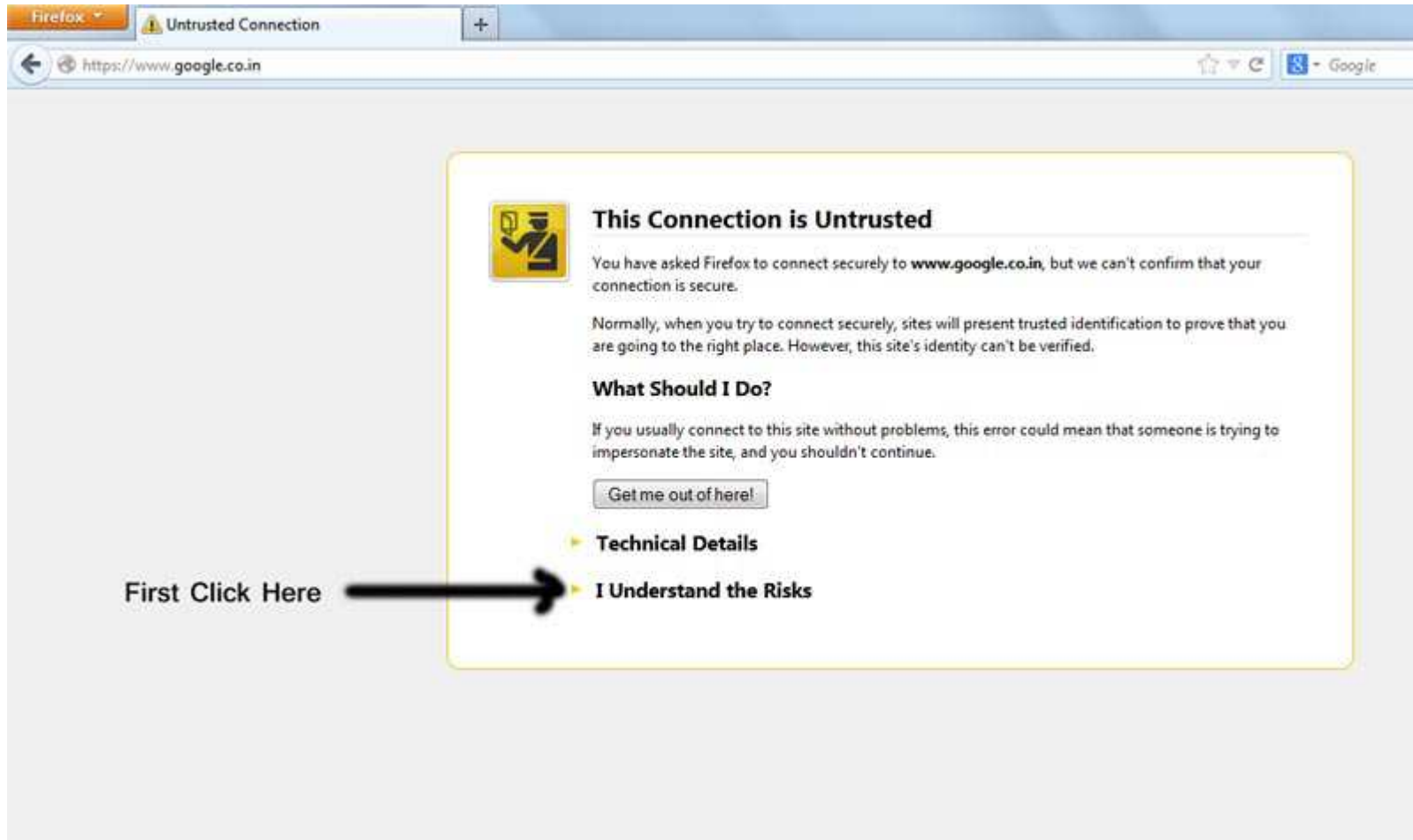
Steps are given for all favorite Browsers.

Just go through all pages of this document.

Internet Explorer




Firefox: Step-1



Firefox: Step-2

Firefox Untrusted Connection +

https://www.google.co.in ☆ ↕ Google

 **This Connection is Untrusted**

You have asked Firefox to connect securely to www.google.co.in, but we can't confirm that your connection is secure.

Normally, when you try to connect securely, sites will present trusted identification to prove that you are going to the right place. However, this site's identity can't be verified.

What Should I Do?

If you usually connect to this site without problems, this error could mean that someone is trying to impersonate the site, and you shouldn't continue.

[Get me out of here!](#)

▶ **Technical Details**

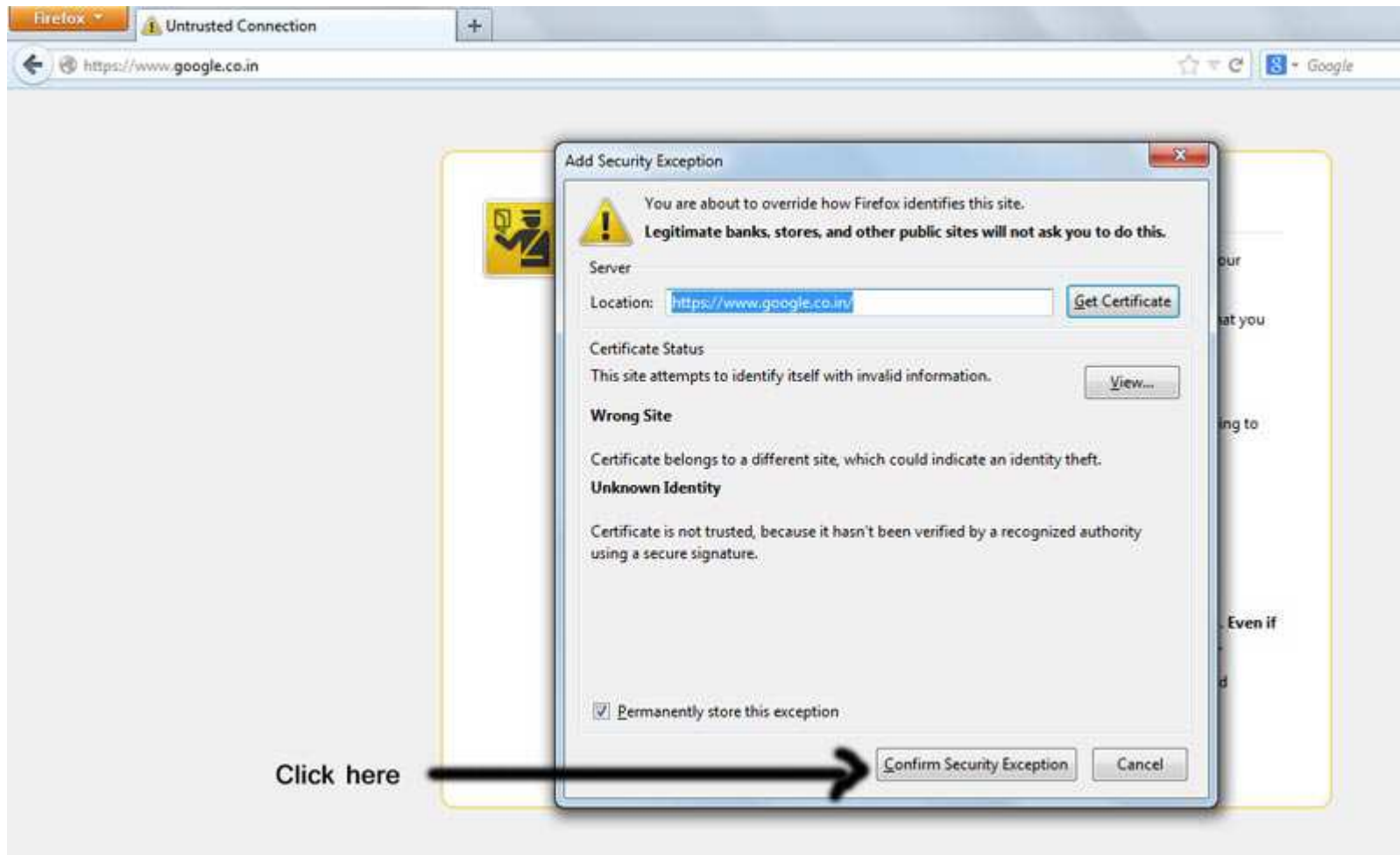
▼ **I Understand the Risks**

If you understand what's going on, you can tell Firefox to start trusting this site's identification. **Even if you trust the site, this error could mean that someone is tampering with your connection.**

Don't add an exception unless you know there's a good reason why this site doesn't use trusted identification.

[Add Exception...](#) ← **Second Click here**

Firefox: Step-3



Google Chrome

